



STREETSCOOTER



StreetScooter.
Tools on wheels.



Made for work.
Built for you.

Table of contents

- Product overview Page 3
- WORK XL Page 5
- WORK Box Page 7
- WORK Pickup Page 9
- WORK Pure Page 11
- Industry solutions Page 13
- Features Page 15
- Safety Page 17
- Prices & technical data Page 19
- Standard features Page 21
- An all-round solution Page 23
- About the company Page 25



What happens when engineers are bold enough to implement ideas themselves? When they take the time to analyze the work processes of their customers and then produce perfect mobility solutions? The answer is the **StreetScooter**.

A zero-emissions light utility vehicle systematically tailored to your needs: practical, robust and economical. At StreetScooter, we don't build cars – we build **tools on wheels**.



Focused on the essentials

StreetScooter offers everything you need. Nothing more and nothing less. By fusing our “essentials only” pragmatism with a clever design, we’ve created a vehicle whose operating and maintenance costs are extraordinarily low. All of which makes the StreetScooter significantly cheaper to operate than a comparable combustion engine truck throughout the course of its service life. We also offer charging infrastructure solutions and personalized government incentive advice at our extensive network of dealerships.

It’s part and parcel of our concept: a vehicle adapted to the industry-specific needs of our customers and yet available at affordable prices.

Achim Kampker
Founder StreetScooter

Two sizes and endless possibilities

The StreetScooter comes in two sizes: the WORK and the WORK L. A compact all-rounder, the WORK has a parking-friendly exterior length of 4.70m; the WORK L – a versatile miracle of space – features a handy 8m³ for even more cargo. Both are available in three different models. The Box and Pickup models are ideal designs for the diverse requirements of various industries. The StreetScooter Pure model offers even more – thanks to the maximum flexibility afforded by its “basic” ready-for-use chassis. Working together with one of our partners, you are involved in developing a vehicle body tailored to your individual specifications. The even larger WORK XL is currently manufactured for use exclusively by Deutsche Post DHL Group.



WORK XL



Box



Pickup



Pure

		WORK XL	WORK	WORK L	WORK	WORK L	WORK	WORK L
Battery	kWh	76	20/40	40	20/40	40	20/40	40
Range according to NEDC²	km	200¹	101/205	187	101/205	187	101/205	187
Payload³	kg	1,175	720/585	905	720/585	890	900/765	1,135
Cargo capacity³	m³	20	4,3	8	—	—	—	—
Top speed	km/h	90	85	85	85	85	85	85
Price excluding VAT⁴	€	—	35,950 / 40,950	45,450	33,950 / 38,950	43,450	31,950 / 36,950	41,450



A payload of 1,175kg and 20m³ of cargo space help make the WORK XL the best vehicle in its class. It can reach speeds of **up to 90km/h** and offers a maximum range of up to 200km. How is that even possible? The vehicle features two lithium-ion batteries with a **battery capacity of 76kWh**.

The WORK XL is manufactured in **partnership with the Ford Motor Company**. This vehicle makes it possible for Deutsche Post DHL Group employees to complete the last mile of delivery quietly and emissions-free – in traffic-calmed areas, green zones and even indoors. The WORK XL is currently manufactured for use exclusively by Deutsche Post DHL Group.



Cargo space
up to 20m³



Payload³
up to 1,175kg



Range
up to 200km¹

When it's a question of size

WORK XL

StreetScooter WORK Box



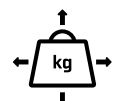
The StreetScooter WORK Box offers 4.3m³ of cargo space. Its big brother, the WORK L Box, offers nearly twice the loading space with its generous 8 m³ interior. Both are versatile all-rounders with an impressive range of features.

Right from the outset it is evident how fundamentally dedicated StreetScooter is to reliability, productivity and ergonomics. It can be seen in our standard sliding doors on both sides and in the vertical door handles, whose perfect ergonomic design support the natural movement of the wrist when the doors are opened. The **slip-resistant floor** was perfected in

numerous tests conducted by Deutsche Post to ensure that your loads stay securely in place. The built-in cargo space lighting consists of several LED lights linked to a **motion detector**. The box body is positioned above the wheel wells. As a result, the whole **cargo space** with its **3,150mm long bed** can be fully utilized. Thanks to a payload of up to 905kg and enough room for four Euro pallets, the StreetScooter outstrips the competition – and does so with zero carbon emissions!



Cargo space
of 8m³



Payload³
up to 905kg



Range
up to 205km
[according to NEDC]²



Vertical door
handles



Flat loading
floor

Numerous
model variants
available



Pickup
with OWS⁵



StreetScooter WORK Pickup



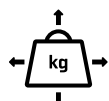
Sides can be
folded down

The StreetScooter WORK Pickup and WORK L Pickup models are true light-weights thanks to aluminum cargo beds; a smart design offering superior efficiency for payloads of up to 890kg. The cargo bed walls fold down for flexibility on the job. The **cargo bed length of over 3,177mm** makes the Pickup perfect for gardening, landscaping and work carried out by local government services. An 18mm thick **slip-resistant floor** offers **absolute stability**, making it the perfect helpmate

for the construction business and the transport of heavy tools. Six TÜV-certified lashing rings, each with breaking strength of 650daN, offer absolute load security. Now nothing can stand in the way of your zero-emissions transport.



Ex-Factory in pure
orange (RAL 2004)



Payload³
up to 890kg



Range
up to 205km
(according to NEDC)²

**A broad range of pickup
accessories and body
variants are available**



StreetScooter
WORK Pure



22

***Tried and tested
body variants
are available***

Maximum flexibility for maximum individuality – that's the principle underlying the tailored solutions of the WORK Pure and the WORK L Pure. Together with our partners, we have developed a variety of body variants for different applications. The **cab** of the WORK Pure offers **sufficient space** for two people, not to mention the **pragmatic ergonomics** of all our StreetScooter models. We collaborate with various body manufacturing partners depending on the industry. Our StreetScooter dealers can help you decide which choices are right for you.

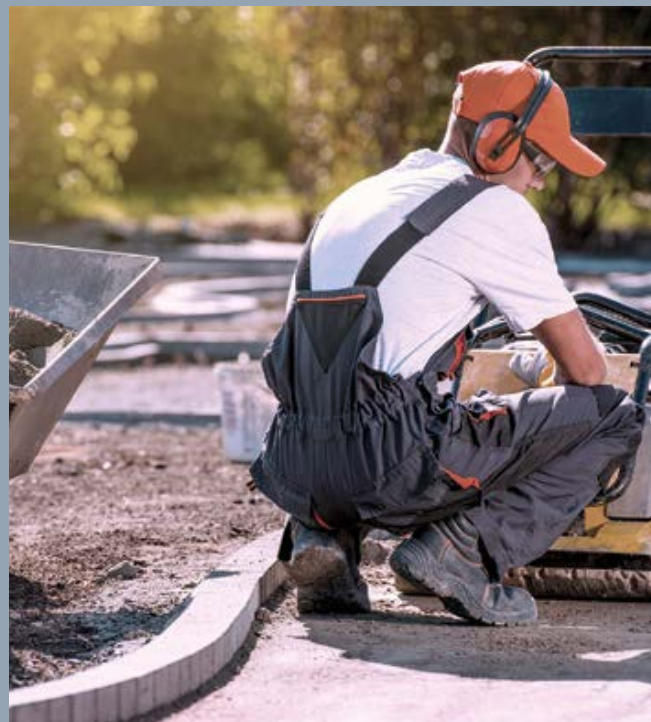


***The basis for customized
design solutions***



The right solution for every industry

Our ability to match even the most complex demands with special truck body designs makes us provider of choice for electric commercial vehicles. Today's heightened environmental awareness and stricter regulations for combustion engine emissions in urban areas can only make StreetScooter even more interesting for your sector.



... for gardening, landscaping and disposal companies

Whether gardening or landscaping, municipal enterprises or construction, the StreetScooter is the ideal work tool for parks and nature conservation areas – it's low noise and zero emissions. The WORK Pickup gives you the maximum flexibility of an electric commercial vehicle with integrated city center mobility.

... for maintenance and assembly teams

Compartment and shelving systems, truck bed drawers or full extension drawer systems in the cargo area as well as load securing using different securing rails: upon request, the StreetScooter WORK can be converted into a universal tool for service and installation/assembly jobs.



... for cold chain transport in metropolitan areas

For delivery services, confectionaries, butcher shops, medicinal product carriers and cold chain contractors, the WORK Cool is a real alternative to combustion engine concepts thanks to its refrigerator superstructure. The refrigeration system utilizes its own discrete battery so that driving range is not affected.



... for flexible logistics providers

The StreetScooter is a re-imagining of the delivery vehicle; it is tailor-made for courier, express and parcel companies. Deutsche Post DHL Group's own fleet of StreetScooters – numbering some 9,000 – have revolutionized today's delivery operations. The WORK XL, based on the Ford Transit, is an entirely new type of vehicle in the transporter van category.

... for cost-oriented fleet managers

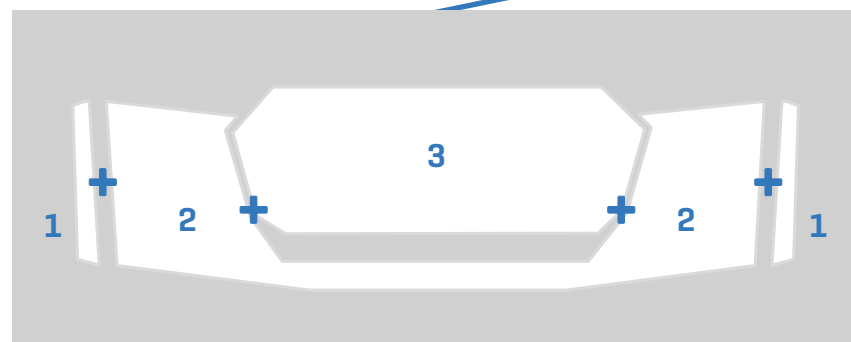
Zero emissions in driver operations matched with the perfect fit for individual business processes: a convincing argument in itself. But when you combine maintenance and operating costs that are lower than those of comparable combustion engine vehicles together with attractive government incentive programs, the conclusion is only logical: StreetScooter is a byword for cost-oriented fleet management.



FEATURES

A vehicle body concept that reduces costs. From the very start.

Whether in construction or operation, the clever body concept is one of a kind among electric commercial vehicles. The hood, the doors, the bumpers and the roof are made of **solid color synthetic components**. They are more than just **scratch resistant** and **exceptionally durable**, they can also be cost-effectively swapped out. The same applies to the **black door guards** mounted on the side doors. All of which **reduces repair costs** to a minimum. The bumpers adhere to the same principle and consist of three separate synthetic components [see below]. In most cases, there is no need to replace all three if the bumper is damaged.



Triple component bumpers



Easy to replace impact protection

A cab that offers robust ergonomics. In every detail.

Functionality is always a top priority: a tidy and neatly arranged “cockpit” gives drivers a good overview. The cab’s ergonomic interior design offers a raised seating position **with space for two people**. It was specially conceived to meet the requirements of trade professionals, and improves **work process efficiency**. The side

bolster of the driver’s seat, for example, has been flattened for easy entry and exit of the vehicle. The StreetScooter also offers first-class functionality and convenience, with **standard features such as heated seats, front windshield defrosters** and **heated exterior mirrors**.

Features that guarantee a comfortable – and enjoyable – working environment.

Smartphone integration

Your smartphone can be connected with the StreetScooter infotainment system via Bluetooth. Navigation, music selection, making and receiving calls or messages – it can all be done with the voice command system. The rear-view camera and 6" display screen offer the best all-around vision available in this vehicle class.

Mobile workspace

Turn your StreetScooter into your mobile workspace. Ergonomically arranged storage compartments in the central console and separating wall offer plenty of space for an organized workflow.

Driving modes

Three different driving modes can be selected for maximizing range. The StreetScooter offers both a standard driving mode and a range-extending eco-mode.



A safety concept that leaves no question unanswered.

StreetScooter passed its **frontal and side crash tests** with flying colors! When it comes to protecting occupants, the StreetScooter **exceeds statutory requirements** – both for side and frontal impact. Standard safety features include an anti-lock braking system [ABS] and electronic stability control system [ESC]⁶ as well as **traction control**, which helps prevent wheel slippage (“over-spinning”), and **intelligent roll-over protection**. When the roll-over protection function detects an impending accident, it brings the vehicle back under control by selective braking of individual wheels. Another special feature is hill-start control.

The StreetScooter’s synthetic vehicle body also offers specific advantages for passive **pedestrian protection**. In addition, the battery sports a **fire protection system** that has been certified in accordance with the ECE-R100 R2 fire resistance test. As a matter of fact, the battery was still functional even after the test!

SAFETY

“Occupant and pedestrian protection exceed statutory requirements considerably”
TÜV Rheinland

Prices

Model	Battery capacity [kWh]	Price excluding VAT ^a [€]
WORK Box	20	35,950
	40	40,950
WORK L Box	40	45,450
WORK Pickup	20	33,950
	40	38,950
WORK L Pickup	40	43,450
WORK Pure	20	31,950
	40	36,950
WORK L Pure	40	41,450



Box



Pickup



Pure

Engine vehicle performance		WORK	WORK L	WORK	WORK L	WORK	WORK L
Electric engine		Permanent-magnet synchronous motor (PMSM)					
Gear box		Single stage differential gearbox					
Drive		Front-wheel drive					
Peak power 30 minutes of continuous power output	kW [pk]	48 [65]/ 39 [53]					
Maximum torque	Nm	200					
Top speed	km/h	85					
Range [according to NEDC] ²	km	101/205 ⁷	187	101/205 ⁷	187	101/205 ⁷	187
CO ₂ emissions [measurement method in line with EU norms]		0					
Efficiency rating		A+					
Battery charging system							
Battery		Lithium-ion battery					
Battery capacity ⁸	kWh	20/40	40	20/40	40	20/40	40
AC charging system connector		Type 2 [single phase, 12 A, 230 V]					
Dimensions weights ³							
Dimensions L / W / H	mm	4,709 / 2,087 / 2,039	5,784 / 2,087 / 2,347	4,741 / 2,087 / 1,859	5,840 / 2,087 / 1,859	4,676 / 2,087 / 1,861	5,784 / 2,087 / 1,867
Total width excluding exterior mirrors	mm	1,925	1,925	1,814	1,814	1,796	1,796
Cargo space, length	mm	2,050	3,150	2,087	3,177	—	—
Cargo space, width	mm	1,665 – 1,745	1,675 – 1,731	1,759	1,757	—	—
Cargo space, height	mm	1,195	1,407	400	400	—	—
Loading edge	mm	772	845	910	950	—	—
Permissible total weight	kg	2,180	2,600	2,180	2,600	2,180	2,600
Unloaded weight	kg	1,460 / 1,595 ⁷	1,695	1,460 / 1,595 ⁷	1,710	1,280 / 1,415 ⁷	1,465
Payload	kg	720 / 585 ⁷	905	720 / 585 ⁷	890	900 / 765 ⁷	1,135
Load volume	m³	4,3	8	—	—	—	—

Essential features

Functional equipment

- Heat (electric)
- Dust filter
- Front windshield defogger (air vents)
- Front windshield defroster
- Air recirculation function
- One-touch turn signal module
- Adjustable tilt/telescoping steering column
- Central locking system incl. remote control
- Power windows (both sides)
- Power exterior side mirrors (both sides)
- Height adjustable H7 headlights for load level adjustment
- Basic LED package (front LED turn signals, front LED position lights, LED brake lights as well as LED daytime running lights)
- Heated exterior side mirrors



Interior

- Infotainment system (radio, Bluetooth hands-free set, rear-view camera, GPS system)
- Heated seats
- Roof lining with interior lighting
- 12V connector
- Various trays and storage compartments
- Water-resistant floor mats/lining
- Adjustable driver/passenger seats

Safety features

- ABS
- ESC (only WORK)
- Power steering
- Three-point seat belts (both sides)
- Seat belt reminder and seat belt pretensioner
- Driver side airbag
- Hill-start control



Instrument panel

- Digital speedometer
- Trip meter/odometer and clock
- Visual and audio drive ready display
- Displays for driving mode, battery charge level, available range and service information

Colors

- White (RAL 9001)
- Pure orange (RAL 2004)
- The OWS⁵ package is subject to a surcharge of €1,000 not including VAT



The all-round solution that keeps you on the go

When it comes to maintenance, repairs, operating costs and insurance, there are numerous advantages when you drive a StreetScooter: vehicles that are robust and reliable, economical, inexpensive to insure as well as emissions-free and tax-exempt. Keep moving thanks to our 360° way of thinking.



Guaranteed battery performance

To ensure you stay mobile, our efficient high-voltage battery is guaranteed for the first six years or 120,000km¹¹. In case of technical defect or degrade of capacity to below 70%, we will repair the battery or replace it free of charge. Details can be found under “Warranty & Services” at www.streetscooter.eu.



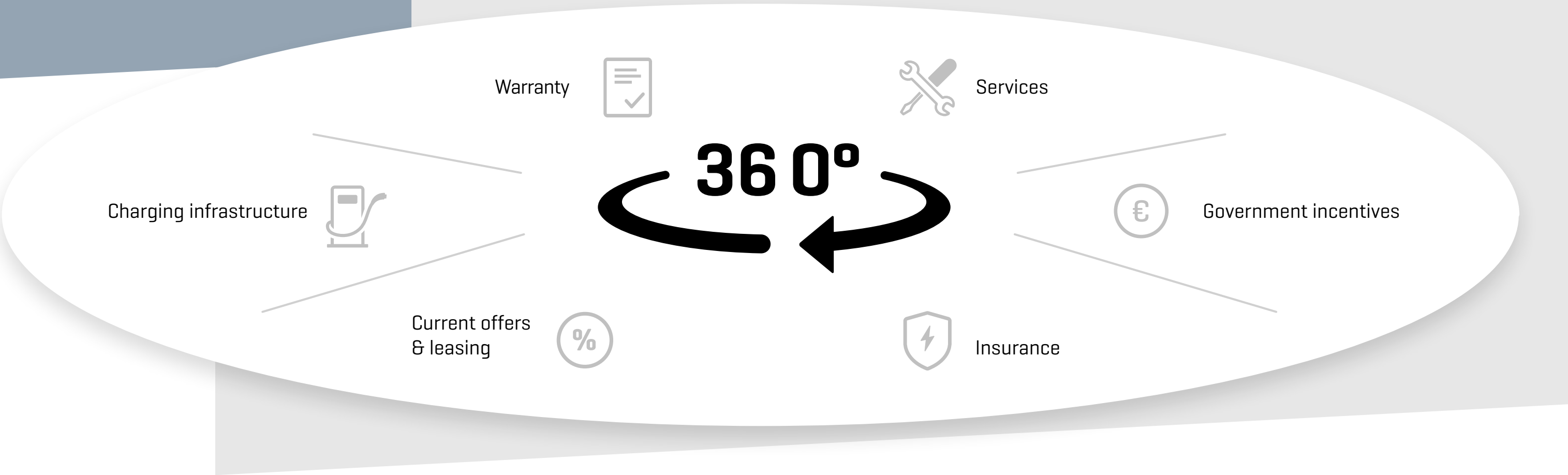
Service hotline

+49 [0] 800 - 787 49 68
[0800 STS 4YOU]
The hotline will answer any questions you have regarding service, accidents and breakdowns.⁹ If you’ve had a breakdown, participating service partners will help you directly on-site or have a towing service take your vehicle to the nearest service location.¹⁰



Modular design minimizes the cost of maintenance

With just a few parts subject to wear and tear and a sturdy truck body, maintenance and service costs are kept low. The unavoidable minor damages and accidents encountered in the challenging daily life of commercial vehicles can be repaired quickly and cost-effectively by specially trained technicians at any of our 450 service points in Germany. The modular design means parts can be replaced quickly and easily. This reduces costs and keeps your “tool on wheels” productive.



Easy charging

We have just the right offers so that you can charge your StreetScooter at your location right after it’s delivered – from a charging system with 11kW charging capacity for individual vehicles to professional consultation and installation of entire ready-to-use fleet solutions. Benefit from the comprehensive expertise we’ve gained from installing over 9,500 charging stations.



Getting started is easy!

Find out about current offers at one of our dealer showrooms in your area [www.streetscooter.eu]. We make it easy for you – with attractive kilometer leasing offers and selectable mileage options, as well as flexible end-of-lease terms including return and purchase options.



Affordably insured

Allianz rewards our customers with low premiums. Why? The particularly low costs of repairs in cases of damage. That means you benefit two-fold from the clever design and manufacturing materials: low service and maintenance bills and low insurance premiums.



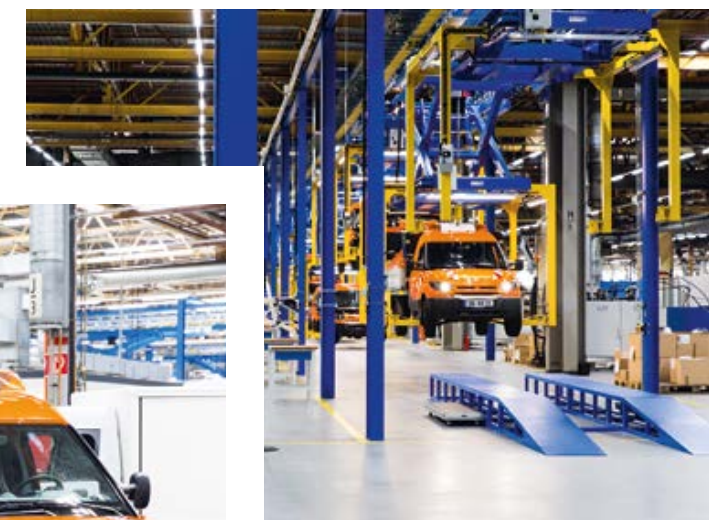
Advice on government incentives

A whole range of government incentive programs are available at the municipal, state and federal levels for the purchase of zero-emissions commercial vehicles. Our dealers will help you find the right financial subsidies for you.



Driven by innovation

At StreetScooter we have one goal: improving the operational work processes of our customers with sustainable mobility solutions. It's in our DNA! The first StreetScooter model was developed from the ground up as a customized tool for delivery operations at Deutsche Post DHL Group. And it is this targeted customer focus that has guided the development of all of our subsequent StreetScooter models. The result is a multitude of tailored industry solutions based on our zero-emissions vehicle. Our current family of models includes electric light utility vehicles. All are manufactured at our Aachen, Cologne and Düren locations with state-of-the-art production technology.





Our roots lie in the institutes of RWTH Aachen, an elite German University of Excellence. From the outset we had the drive to transform bold ideas into realities more quickly, systematically and sustainably than others. Today, StreetScooter is the market leader for electric light utility vehicles in Germany. Our customers in handicraft businesses, large fleet companies and municipalities value our robust, reliable and cost-effective “tools on wheels”. Made for work. Built for you.



We have systematically taken advantage of the opportunity to move forward at speed in an exciting nascent market while others have simply waited for that market to develop.

Achim Kampker
Founder StreetScooter



Founder Achim Kampker with the German Chancellor Angela Merkel at the presentation of the first StreetScooter prototypes at the IAA 2011

Footnotes

- 1 Preliminary ranges until final review
- 2 Range according to NEDC. The actual range depends on different factors such as personal driving style, speed, topography, payload, outside temperature and electrical load. These factors should be taken into consideration whenever possible by drivers for maximum vehicle range. The range for vehicles with special truck or van bodies may differ from the standard model.
- 3 Information on dimensions and weights may vary depending on equipment. All weights refer to the vehicle in running order and include driver (75kg) and liquids..
- 4 All prices are StreetScooter GmbH recommended retail prices, plus transport costs. Prices, technical data and equipment correspond with information available at the time of printing. We reserve the right to make changes to the StreetScooter models described above. Your StreetScooter dealer will inform you about any changes.
- 5 Optical Warning System [rotating lights]
- 6 Only available for the StreetScooter WORK
- 7 Information for the WORK with a 40kWh battery
- 8 Net figures
- 9 Service hours: Mon. – Fri.: 7:00 am to 5:00 pm
- 10 Only at participating service partners
- 11 The warranty applies to the lithium-ion high volt deep-cycle battery of a factory-new "WORK" or "WORK L" electric vehicle from StreetScooter. The warranty applies to the vehicle's first 120,000km and ends, regardless of actual kilometers driven, no later than six years after the initial delivery or initial registration of the vehicle whichever comes first.

Photo credits

www.nutzfahrzeuge-magazin.de

www.e-vade.de, © E-VADE GmbH

www.kress.eu, © KRESS Kühlfahrzeuge & Kühlanhänger

www.bott.de, © Bott GmbH & Co. KG



Vehicle images in this document may include optional extras or vehicle bodies which are available only at an extra charge. For individual wishes and configurations, please consult your StreetScooter dealer.

All data and specifications are in accordance with information available at the time of printing [March 2019]. Subject to errors and changes. At StreetScooter, we continually strive to further develop our products and reserve the right to make changes to the models described above at any time. All information and pricing are stated in euros and valid for the German market.

Company details

StreetScooter GmbH
Jülicher Straße 191
52070 Aachen, Germany

Phone: +49 [0] 241 9900 23-0
E-mail: info@streetscooter.eu
Website: www.streetscooter.eu





STREETSCOOTER

www.streetscoter.eu

In the event of questions, please contact us by calling +49 (0)241 9900 23 - 0

StreetScooter is
a company of

Deutsche Post DHL Group