



STREETSCOOTER



StreetScooter
Tools on wheels



Made for work,
built for you.

Table of Contents

| | |
|------------------------------|---------|
| Product overview | Page 5 |
| WORK Box..... | Page 6 |
| WORK Pickup..... | Page 8 |
| WORK Pure..... | Page 10 |
| Industry solutions..... | Page 12 |
| Features..... | Page 14 |
| Safety..... | Page 17 |
| Prices & technical data..... | Page 18 |
| Standard equipment..... | Page 20 |
| Mobility concept..... | Page 22 |
| PEDELECS..... | Page 24 |



Source: www.nutzfahrzeuge-magazin.de

What happens when engineers have the courage to implement their own ideas? What if they first analysed their clients' workflow and then produce tailored mobility solutions? The answer is StreetScooter. An emission-free commercial vehicle, consistently geared to your needs: **Suitable, robust and economical.** At StreetScooter, we do not build cars, we build **tools on wheels.**



Two sizes and endless possibilities

You can get the StreetScooter in two sizes: As a compact all-rounder, WORK with a car park friendly 4.70m exterior length and as an everyday space miracle WORK L with a useful 8 m³ load volume. Both sizes are available in 3 model variants. The variants Box and Pickup are ideally suited to the different requirements of lots of industries. Pure also offers maximum flexibility as a clean roadworthy chassis. You design its structure together with one of our partners according to your individual requirements.



Straight to the point

StreetScooter offers you everything you need. No more and no less. With this focus on the nitty gritty and the well thought-out design, the operating and maintenance costs are extremely low. Over the course of its entire operating life, StreetScooter is thus significantly cheaper than a comparable combustion engine. We also offer load infrastructure solutions and tailored funding advice through our extensive dealership network.

Part of our concept is that we adapt the vehicles to the **industry-specific needs** of our clients and yet we can still offer an affordable price.

Achim Kampker, CEO StreetScooter



Box

Pickup

Pure

WORK XL

| | Box | | Pickup | | Pure | | WORK XL |
|---|---------------|--------|---------------|--------|---------------|--------|------------------|
| | WORK | WORK L | WORK | WORK L | WORK | WORK L | WORK XL |
| Battery [kWh] | 20/40 | 40 | 20/40 | 40 | 20/40 | 40 | 76 |
| Range according to NEDC ¹ [km] | 101/205 | 187 | 101/205 | 187 | 101/205 | 187 | 200 ² |
| Payload [kg] | 720/585 | 905 | 720/585 | 890 | 900/765 | 1,135 | 1,150 |
| Load volume [m ³] | 4,3 | 8 | - | - | - | - | 20 |
| Top speed [km/h] | 85 | 85 | 85 | 85 | 85 | 85 | 90 |
| Price excl. VAT [€] ³ | 35,950/40,950 | 45,450 | 33,950/38,950 | 43,450 | 31,950/36,950 | 41,450 | - |

¹ The stated range was determined according to the NEDC. The actual range is dependent on different factors such as personal driving style, speed, track characteristics, payload, exterior temperature and degree of use of electrical consumers. In order to maximize the range, these factors should be considered by the driver when they can be influenced. The range can deviate from the data for standard models for vehicles with special structures.

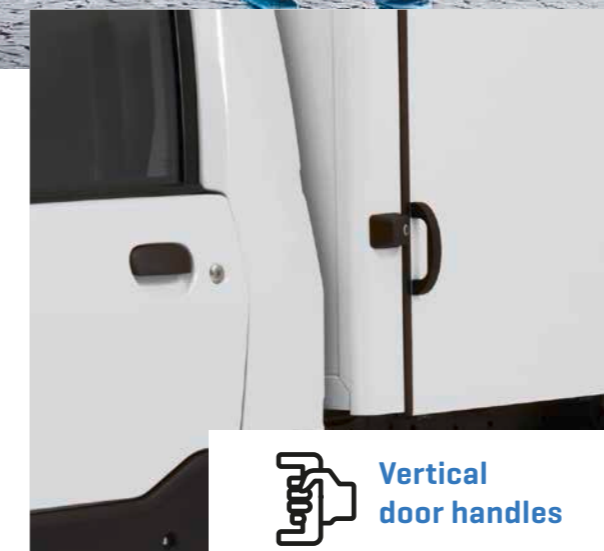
² Estimated range

³ All quotations are recommended retail prices from StreetScooter GmbH plus transfer and transport costs. The prices, technical details and equipment features correspond to the information known at the time of printing. We reserve the right to make changes to the described StreetScooter models. Your StreetScooter retailer will advise you of changes.

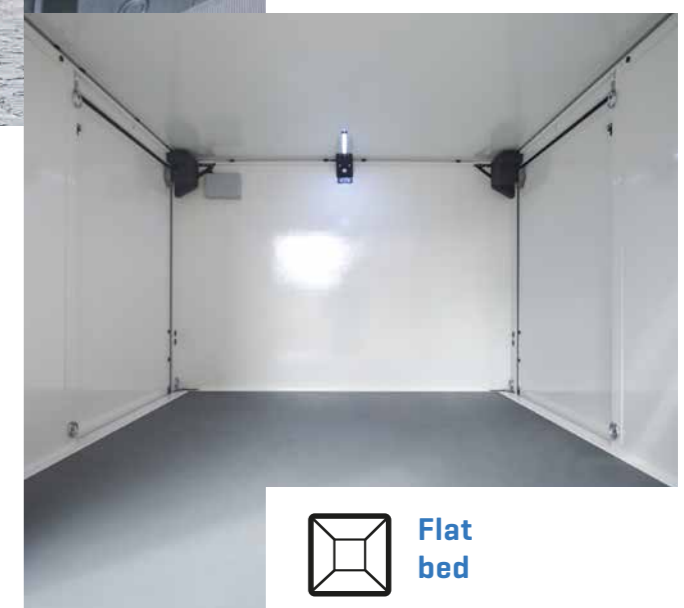
StreetScooter WORK Box



 Ergonomic cockpit



 Vertical door handles



 Flat bed

The StreetScooter WORK Box with a load volume of 4.3m³ is also available as the WORK L Box with a load volume of 8m³. Both are variable all-rounders. It is already obvious from the first features how strong the StreetScooter's focus on reliability, productivity and ergonomics is.

This is demonstrated by the **standard sliding doors on both sides** and the vertical door handles, which support our natural wrist movement with ergonomic perfection when opening the doors. The **non-slip flooring** was perfected at the Deutsche Post in numerous tests and ideally secures any cargo. The lighting installed in the cargo area consists of multiple LED lamps, which react to a **motion sensor**.



The platform is located above the wheel housings so that the entire **cargo area** with a **length of up to 3,150mm** can be fully used. Thanks to its payload of up to 905kg and space for up to four Euro pallets, the StreetScooter surpasses all competition with zero emissions.

 Load volume up to 8m³

 Payload up to 905kg

 Range according to NEDC¹ up to 205km

BOX

Numerous types of customizing available



 Pickup with OWS



StreetScooter
WORK Pickup



 Sides can be folded down

The StreetScooter WORK Pickup and WORK L Pickup models are real lightweights with their aluminium platforms, so that they can be particularly efficient with a payload of up to 890kg. The folding side panels make them flexible in use. With a **loading length of up to 3,177mm** the StreetScooter WORK Pickup is perfectly suitable for municipal applications as well as for gardening and landscaping. With a thickness of 18mm, the **non-slip screen floor** provides **absolute stability** and is therefore also a suitable companion in the building industry, to be able to transport heavy equipment. The 6 lashing eyes, each of which is 650daN and certified by TÜV (Technical Inspection Agency), ensure absolute safety. Consequently, nothing is standing in the way of your zero emission transport of goods.



 ex factory in RAL 2004 pure orange

 Payload up to 890 kg

 Range according to NEDC¹ up to 205km

Numerous platform accessories and design configurations available



StreetScooter
WORK Pure



22

Proven and tested
design configurations

Maximum flexibility for maximum individuality - that is the principle the customized design solutions of the WORK Pure and WORK L Pure are based on. Together with our partners, we developed a variety of designs for various areas of use. The cab of the WORK Pure provides sufficient space for 2 people and the pragmatic ergonomics of all StreetScooter models. Depending on the sector, we work with different design partners. In this connection, our StreetScooter dealers are happy to advise you from A to Z. You can find the modification guideline at www.streetscooter.eu.



PURE

The basis for customized
design solutions



Source:
www.e-vade.de, © E-VADE GmbH
<https://www.kress.eu/de/>, © KRESS Kühlfahrzeuge & Kühlanhänger
<https://www.bott.de>, © Bott GmbH & Co. KG

A solution for every industrial sector

Our abilities to solve even the most complex requirements by means of special designs makes us your first choice for electric commercial vehicles. Increased environmental awareness and stricter regulations for exhaust emission within cities for combustion engines make the StreetScooter even more interesting for your sector as well.



... for landscaping and disposal companies

Whether gardening and landscaping, municipal companies or the construction industry: The StreetScooter is the ideal tool in parks and nature reserves - quiet and zero-emissions. With the WORK Pickup we offer the maximum flexibility of an electric commercial vehicle with integrated inner-city mobility. As a result, you assume a leading role in the change of drive power.

... for service and maintenance teams

Cabinet and shelf systems, underfloor drawers or the full extension runner systems in the cargo area, cargo securing with various lashing rails: Upon request, the WORK can be turned into a universal tool for service and assembly work.



... for refrigerated transports in metropolitan areas

With its refrigerated body, the WORK Cool is a genuine alternative to concepts with combustion engines for delivery services, pastry shops, butcher shops, carriers of pharmaceutical products and suppliers of frozen foods. Refrigeration is provided by an additional battery, so that the range is not affected.



... for flexible logistics specialists

The StreetScooter was designed for this. The 7,500 StreetScooters which are already operated by the Deutsche Post have revolutionized delivery operations. With the WORK XL, we also make available a newly developed vehicle in the class of light transport vehicles based on the Ford Transit platform.

... for cost-oriented fleet managers

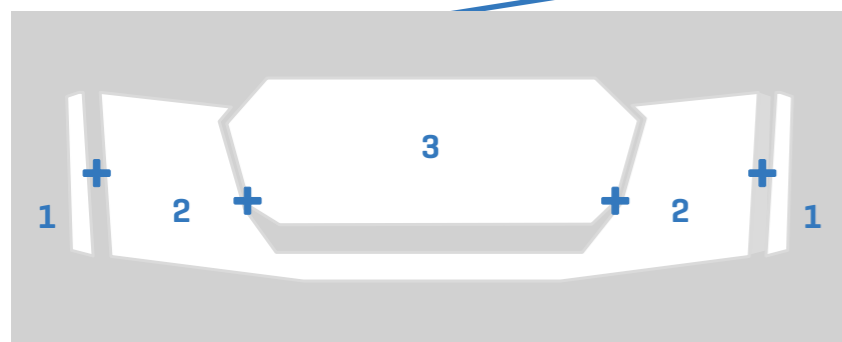
Zero emissions in drive mode meets the perfect tailor-made suit for individual business processes: This alone sounds very convincing. Then, if you also consider the lower maintenance and operating costs compared to a combustion engine as well as the appealing funding programmes, you will be convinced: StreetScooter is also a synonym for cost-oriented fleet management.



FEATURES

A body concept that reduces costs. Right from the start.

Whether in construction or operation: The well-thought-out body concept is absolutely unique among electric commercial vehicles. The engine bonnet, the doors, the bumpers and the roof are made of **coloured synthetic parts**. They are not only **scratch resistant** and **particularly hard-wearing** but also inexpensive to replace. Just like the **black impact protection** installed on the side doors. This **reduces the repair costs** to a minimum. The fender [1-3] consisting of three synthetic parts is based on the same principle, which in most cases of damage does not have to be completely replaced because of its segments.



Triple segmented bumper



Easy-to-replace crash protection

A cabin which offers robust ergonomics. In every detail.

Functionality is always at the fore for StreetScooter: The tidy, open cockpit provides a good overview. The ergonomically designed passenger compartment with a raised seat position offers **space for up to 2 people**. It was specially developed for the requirements of traders and supports **efficient workflow**. For example, the side frame of the driver's seat is flat for perfect entry and exit. With the **standard heated seats**, the **heated windshield** and the **heated rear view mirrors**, the StreetScooter offers you the best possible comfort.

Features which guarantee having fun at work.

Smartphone integration

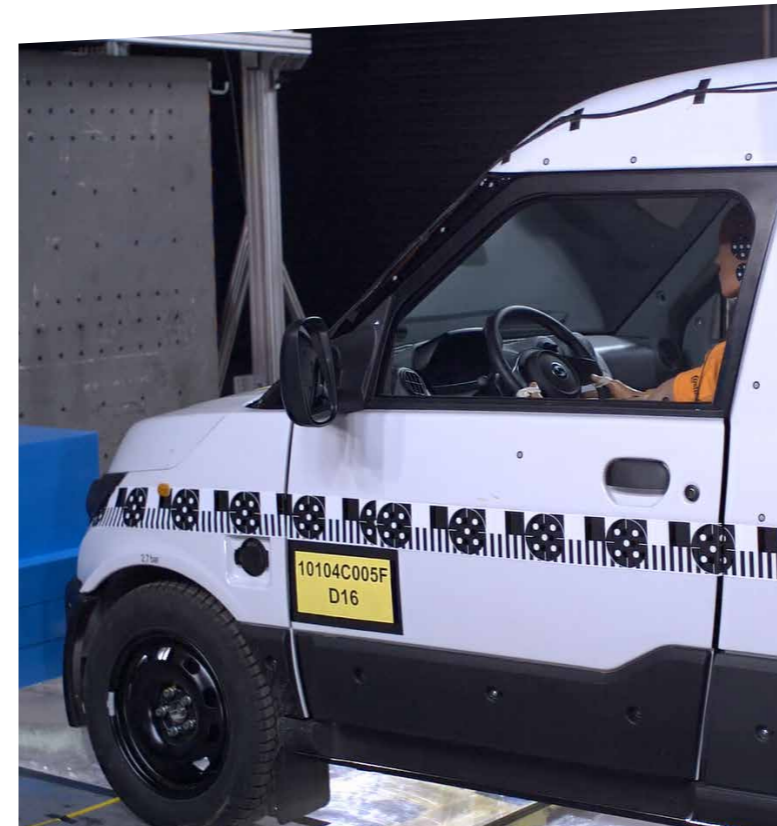
A smartphone can be easily connected to the StreetScooter infotainment and GPS system including the hands-free system via Bluetooth. Selecting music, making or answering calls and receiving messages is possible without any problems with voice control. Furthermore, the rear view camera with its 6 inch display offers the best all-round visibility in its class.

Mobile workplace

Turn your StreetScooter into your safe mobile workplace. The ergonomically arranged compartments in the centre console and on the dividing wall offer sufficient space for an organized work flow.

Drive modes

Three different drive modes can be chosen from, to maximize the range. In addition to the normal drive mode, the StreetScooter also offers you the Eco mode, which prolongs the ranges.



A security concept, which does not leave any questions unanswered.

The **crash tests, which were passed with flying colours**, for frontal and side impact have proven that the StreetScooter **exceeds the legal requirements** for the protection of its passengers - in the case of frontal as well as side impact. Standard features of the StreetScooter include an anti-lock braking system (ABS) and an electronic stability programme (ESP).

Traction control, which prevents wheel spin and the **intelligent rollover protection** are also standard features. The rollover protection recognizes the risk of an impending accident and brings the vehicle back under control by means of specific brake intervention. Another special feature is the hill hold control.

Passively, the synthetic body offers specific advantages for **pedestrian protection**. The battery is also protected; its **fire resistance** is certified according to ECE-R100 R2. Extraordinary: It was even still functional after the corresponding test.

“Passenger and pedestrian protection significantly exceed the legal requirements”
TÜV Rheinland

Prices³

| Model | Battery capacity [kWh] | Price excl. VAT [€] | Price incl. VAT [€] |
|-------------|------------------------|---------------------|---------------------|
| WORK Box | 20 | 35,950 | 42,781 |
| | 40 | 40,950 | 48,731 |
| WORK Pickup | 20 | 33,950 | 40,401 |
| | 40 | 38,950 | 46,351 |
| WORK Pure | 20 | 31,950 | 38,021 |
| | 40 | 36,950 | 43,971 |

| Model | Battery capacity [kWh] | Price excl. VAT [€] | Price incl. VAT [€] |
|---------------|------------------------|---------------------|---------------------|
| WORK L Box | 40 | 45,450 | 54,086 |
| WORK L Pickup | 40 | 43,450 | 48,186 |
| WORK L Pure | 40 | 41,450 | 49,326 |



| Engine/mileage | | WORK | WORK L | WORK | WORK L | WORK | WORK L |
|--|----------------|--|---------------------|-----------------------------|---------------------|--------------------------|---------------------|
| Electric engine | | Permanently excited synchronous machine (PESM) | | | | | |
| Gears | | Single-stage transmission with differential | | | | | |
| Drive | | Front-wheel drive | | | | | |
| Power, max./ 30 minutes continuous output | kW [PS] | 48 (65)/ 39 (53) | 48 (65)/ 39 (53) | 48 (65)/ 39 (53) | 48 (65)/ 39 (53) | 48 (65)/ 39 (53) | 48 (65)/ 39 (53) |
| Torque, max. | Nm | 200 | 200 | 200 | 200 | 200 | 200 |
| Top speed | km/h | 85 | 85 | 85 | 85 | 85 | 85 |
| Range according to NEDC ¹ | km | 101/205 ⁴ | 187 | 101/205 ⁴ | 187 | 101/205 ⁴ | 187 |
| CO ₂ emissions (measurement methods by EU type) | | 0 | 0 | 0 | 0 | 0 | 0 |
| Efficiency class | | A+ | A+ | A+ | A+ | A+ | A+ |
| Battery / charge system | | | | | | | |
| Battery | | Lithium ion battery | | | | | |
| Battery capacity ⁵ | kWh | 20/40 | 40 | 20/40 | 40 | 20/40 | 40 |
| AC charge connection | | Type 2 (single-phase, 12 A, 230 V) | | | | | |
| Dimensions / weights⁶ | | | | | | | |
| Dimensions L/W/H | mm | 4,709/2,087/2,039 | 5,784/2,087/2,347 | 4,741/2,087/1,859 | 5,840/2,087/1,859 | 4,676/2,087/1,861 | 5,784/2,087/1,867 |
| Total width excl. exterior mirrors | mm | 1,925 | 1,925 | 1,814 | 1,814 | 1,796 | 1,796 |
| Load length | mm | 2,050 | 3,150 | 2,087 | 3,177 | - | - |
| Load width | mm | 1,665 - 1,745 | 1,675 - 1,731 | 1,759 | 1,757 | - | - |
| Load height | mm | 1,195 | 1,407 | 400 | 400 | - | - |
| Sill | mm | 772 | 845 | 910 | 950 | - | - |
| Gross vehicle weight | kg | 2,180 | 2,600 | 2,180 | 2,600 | 2,180 | 2,600 |
| Curb weight | kg | 1,460 kg/1,595 ⁴ | 1,695 | 1,460 kg/1,595 ⁴ | 1,710 | 1,280/1,415 ⁴ | 1,465 |
| Payload | kg | 720 kg/585 ⁴ | 905 | 720 kg/585 ⁴ | 890 | 900/765 ⁴ | 1,135 |
| Load capacity, max. | m ³ | 4.3 | 8 | - | - | - | - |

⁴ Specifications for the WORK with 40kWh battery

⁵ Net values

⁶ The specifications pertaining to dimensions and weights can vary depending on features. All weight specifications refer to the vehicle in an operational status incl. driver (75kg) and liquids.

Essential features

Vehicle functions

- Heating [electric]
- Dust filter
- Anti-fog nozzle windscreen
- Windscreen heating
- Recirculation function
- One touch turn signal control
- Height- and reach-adjustable steering wheel
- Central locking system incl. remote control
- Electric car windows [both sides]
- Electric rear view mirror adjustment [both sides]
- Headlights H7 with height adjustment for load level adjustment
- Basic LED package [front turn signals in LED technology, LED position light in the front, LED brake light as well as LED daytime running light]
- Heated rear view mirrors



Interior

- Infotainment system [radio, Bluetooth hands-free equipment, rear view camera, GPS function]
- Heated seats
- Roof fairing with interior lighting
- 12V connector
- Various trays and compartments inside
- Water-repellent footwell lining
- Driver's seat adjustable to multiple positions
- Driver's/passenger seat: adjustable in height, reach and inclination
- Adjustable backrest

Safety features

- ABS
- ESC [only WORK]
- Power steering
- Three-point seat belts [both sides]
- Seat belt reminder & seat belt tensioner
- Driver airbag
- Hill hold control



Instrument cluster

- Instrument use with digital speed indicator
- Trip display and time
- Visual and acoustic ready to drive display
- Displays for drive mode, range and service information

Colours

- Bianco white
- Pure orange RAL 2004
- The OWS package is subject to an additional price of €1,000 excluding VAT.



The complete solution for your mobility

Robust and reliable, cost-saving and inexpensive to insure, zero emissions and exempted from tax: you can enjoy these advantages with a StreetScooter for maintenance, repairs, operating costs and insurance. Benefit from our 360° way of thinking when it comes to your mobility.



Guaranteed battery performance

To ensure you always remain mobile, we guarantee an efficient high-voltage battery⁹ for the first 6 years or 120,000km. In the event of a technical defect or loss of capacity amounting to less than 70% of the power, we will repair the battery or replace it free of cost. You can find details under "Guarantee for traction batteries" at www.streetscooter.eu.

Service hotline

0800 - 787 49 68 [0800 STS 4YOU]
Our hotline can be of assistance for questions regarding service, accidents or breakdowns.⁷ Participating service partners support you in cases of a breakdown directly on location or organize a towing service to the nearest service location for you.⁸



Modular design minimizes maintenance costs

Few wear parts and a robustly built body keep the costs for maintenance and service low. Unavoidable smaller damages or accidents, which take place in the challenging daily life of commercial vehicles, can be repaired quickly and in a cost-saving manner at one of our 450 service stations in Germany. There, you will find specifically qualified technicians. They can replace parts quickly and without any complications thanks to the modular design. This reduces costs and keeps your tool on wheels productive.



Free charging station

When purchasing a StreetScooter, you get a charging station free of charge. The eBox Fino has a charging capacity of 11kW. We are happy to advise you on setting up your charging infrastructure. With a highly competent team of experienced partners, we can install a ready to use charging infrastructure at your location.



Easy first encounter

Experience current offers in the showroom at our dealers' locations in your vicinity [search at www.streetscooter.eu]. Let us make your first encounter easy – with appealing full service leasing offers with freely selectable mileage and flexible lease terms with return and take-over options.



Favourable insurance

The Allianz rewards the particularly low repair costs in cases of damage with low fees. Therefore, you benefit from the clever design and materials used twice - with low repair shop bills and low insurance premiums.



Advice on funding programmes

Purchasing a zero emissions commercial vehicle is supported by many funding programmes provided by the EU, the federal government and federal states. Our dealers will help you find the appropriate and suitable financial support.

⁷ Service hours: Mon – Fri: 7:00 am to 5:00 pm

⁸ Only at participating service partners

⁹ The guarantee applies to the lithium ion high-voltage traction battery of a brand new electric vehicle - models "WORK" and "WORK L" from StreetScooter. The guarantee is valid for the vehicle's first 120,000km and ends, irrespective of the kilometres driven, 6 years after initial delivery or initial registration of the vehicle, at the latest. Whichever occurs first is decisive.

The Deutsche Post DHL is already using several thousand bikes and trikes with **electric drive technology**. Therefore, the current generation of StreetScooter PEDELECS belong to the most tested cargo bikes in the world. And, it's a **sustainable best-selling product** made in Germany.



One of the most frequently tested cargo bikes in the world

The ideal tool for urban deliveries

The StreetScooter PEDELECS are electric cargo bikes, which only support the rider with electric drive, when the rider pedals him- or herself at the same time. StreetScooter offers the TRIKE and the BIKE — ideally adapted to urban requirement profiles. Courier services, delivery services, facility management, sanitation departments, park maintenance or other municipal tasks — all of them benefit from the cargo box, which can be flexibly adapted to customer requirements.

The StreetScooter PEDELECS have literally “experienced” their reliability in daily operations. The use of several thousand PEDELECS rode in the service of the Deutsche Post DHL have continuously provided the StreetScooter engineers at the production site in Aachen with new ideas for improvement. Ideas, which have allowed the TRIKE and the BIKE to become a synonym for reliability and suitability for daily use.



BIKE

With its slim design and the individually adaptable transport box, the flexible solution for urban areas.



TRIKE

Maximum payload and a frame construction, which enables numerous versions of the transport box, make the trike unique.

PEDELECS

Tools on two or three wheels



Innovation is our drive

We at StreetScooter have one objective: To improve our customers' operational procedures with sustainable mobility solutions. It's in our DNA! Even the first StreetScooter model was tailored to the delivery service of the German postal service Deutsche Post. Precisely this customer focus was also the priority in the development of all other StreetScooter models. The result is a multitude of customized sector solutions based on our zero emissions vehicles. Currently, the model family includes electric commercial vehicles and cargo pedelecs in various sizes, which are manufactured at production sites in Aachen and Düren using cutting edge production technology.

Our roots are based in the environment of the "Excellent University" Aachen. Even back then, we were courageous enough to implement good ideas quicker, more sustainably and more consistently. Today, StreetScooter is the market leader for lightweight electric commercial vehicles in Germany with more than 10,000 vehicles sold. Our customers in craftsman's businesses, large fleets and municipalities appreciate our robust, reliable and cost-saving tools on wheels. Made for work, built for you.

” In the 19th century engineers were always thinking of higher, quicker and farther. Today, we have to **contribute to sustainability**. We have to preserve and protect our world.

Achim Kampker, CEO StreetScooter



CEO Achim Kampker with the German Chancellor Angela Merkel at the presentation of the first StreetScooter prototypes at the IAA 2011

Illustrations of vehicles in this document may include optional extras or vehicle superstructures which are available only at an extra charge. For individual wishes and configurations you should always consult your StreetScooter dealer.

Please note: All data and specifications are in accordance with information available at the time of going to print (December 2018). Errors and omissions excepted. The specifications in this publication are for information purposes only as StreetScooter's products are continually updated and changes may be made to the specifications at any time. Declarations and prices are specified in Euro and valid for the German market.

StreetScooter GmbH

Jülicher Straße 191
52070 Aachen

Telephone: +49 [0] 241 9900 23-0

Fax: +49 [0] 241 9900 23-26

Email: info@streetscooter.eu

StreetScooter ist
ein Unternehmen von

Deutsche Post DHL Group